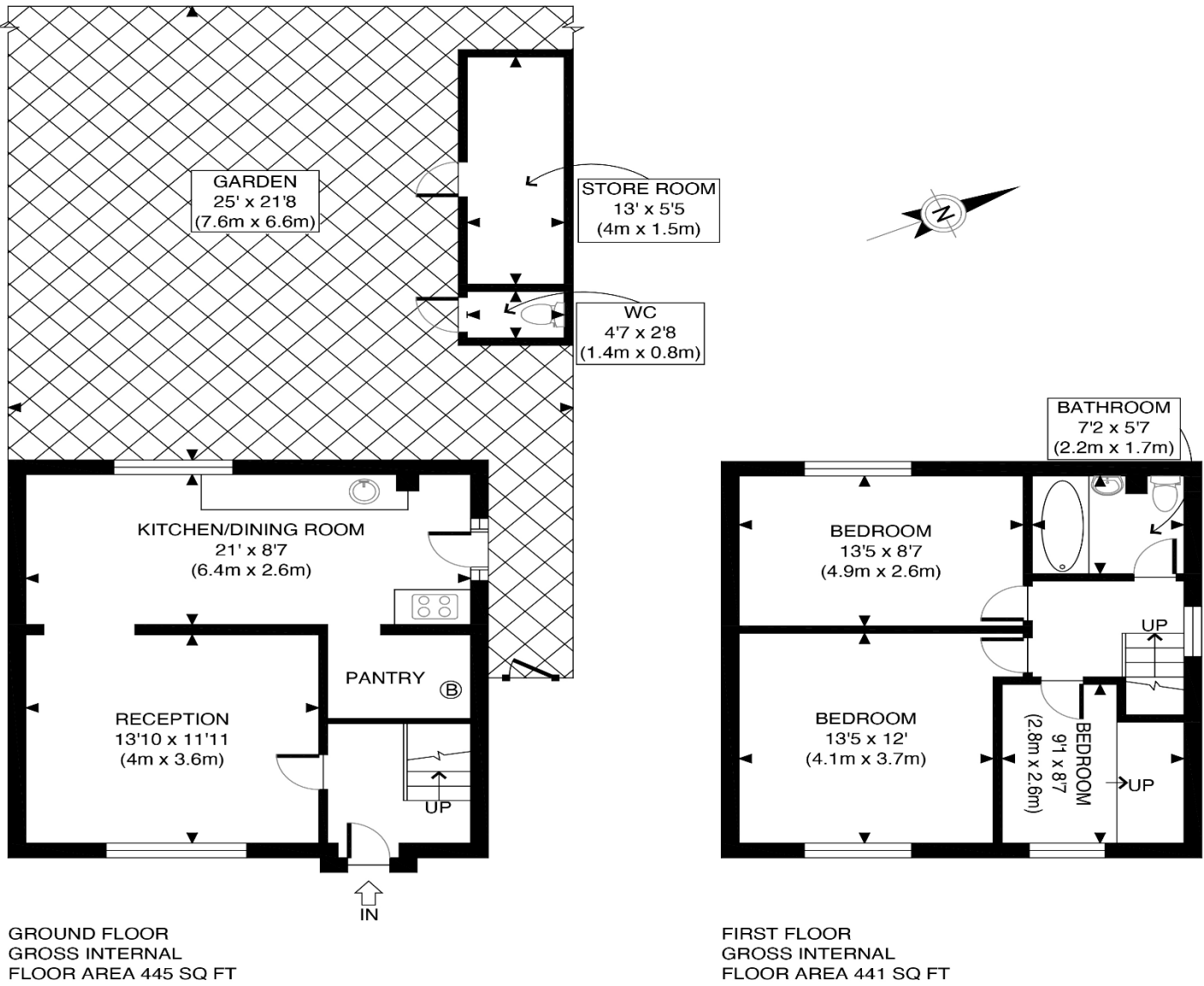


# The Floorplan...



## More Details From...

Call: **Brian Cox North Harrow: 020 3866 6640**  
Email: **Azi.Rahman@brian-cox.co.uk**  
Web: **www.brian-cox.co.uk**



Consumer Protection from Unfair Trading Regulations 2008 We have not tested any apparatus, equipment, fixtures, fittings or services and so cannot verify that they are in working order or fit for purpose. You are advised to obtain verification from your solicitor or surveyor. References to the tenure of a property are based on information supplied by the seller. We have not had sight of the title documents and a buyer is advised to obtain verification from their solicitor. Items shown in photographs are not included unless specifically mentioned within the sales particulars, but may be available by separate negotiation. We advise you to book an appointment to view before embarking on any journey to see a property, and check its availability.



0203 866 6640  
brian-cox.co.uk



Brian Cox Estate Agents are delighted to introduce you to a captivating West facing Three-Bedroom BISF Type house to the market! This property is nestled on a tranquil tree-lined residential road. Situated on Hutton Lane, which is walking distance from both great schools and transport links. As you approach, you'll be greeted by a spacious front garden that leads to a welcoming porch. On the ground floor you have a generous size living room which seamlessly flows into the second reception room/open plan kitchen. The kitchen then backs onto a lovely well maintained garden. Making your way upstairs you have three very good size bedrooms with a family bathroom. This property is being sold chain free



Offers in Excess of  
£400,000

Hutton Lane, Harrow HA3 6QY



## In Brief...

- Three Bedroom Semi Detached House
- Chain Free Purchase
- Front & Rear Garden
- Gas Central Heating
- Lovely Garden
- EPC Rating E & Council Tax Band C



## The Location...

### Nearest stations ...

Headstone Lane Station - 0.5 miles  
Hatch End Station 0.9 miles  
Harrow & Wealdstone Station 1.2 miles

Harrow Weald is an area in North West London, England. It includes a suburban development and forms part of the London Borough of Harrow. Harrow Weald is near Bushey Heath, Stanmore, Wealdstone, Headstone and Hatch End. It is in the HA postcode area. The south of the area is a suburban development with houses, schools, small shops and supermarkets